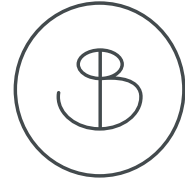


SOUTH BANK

TURKS & CAICOS

*The Boathouses*



# Door to shore living for *a relaxed life on the water*

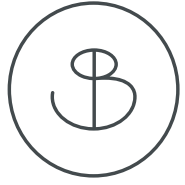
Discover a village-style community where passions and adventures are shared. Located on the marina waterfront, The Boathouses have private docks directly off a rear terrace, ensuring your boat is close at hand for when the ocean calls.

The Boathouses are designed for a vibrant lifestyle, arranged around a signature pool and landscaped relaxation area with loungers, hammocks, and bathrooms. It's an ideal atmosphere to relax, connect with nature and enjoy South Bank with friends and family.

The Boathouses offer the perfect balance of community, stunning views and space, enhanced by all the luxury amenities and benefits of a home within a fully managed residential resort and Marina community.







# The Boathouses

## *Specifications*

### KEY FEATURES

- Italian designed Arclinea kitchens
- GE or equivalent appliances
- Individual boat docks on each Boathouse for up to 26ft boats
- Dining terrace overlooking dock
- Central community area featuring pool, sunbeds, lounging chairs and bathrooms

### PROPERTY TYPES

2 Bedroom 2.5 Bathroom

Total Covered Area:  
1,783 sqft

Total External Area:  
776 sqft

Total Area:  
2,559 sqft

### AMENITIES

The resort amenities include:

- Clubhouse with Lua restaurant and bar
- Spa and Gym
- Tennis and Pickleball courts
- Swimming Lagoon with lounging islands
- Long Bay Beach access
- Security access
- Marina services







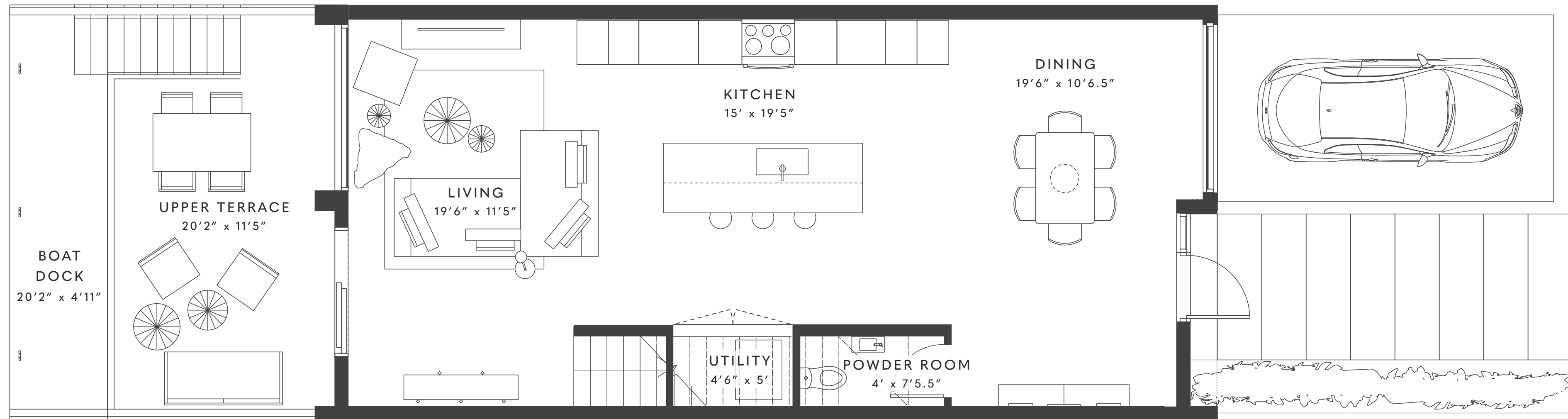
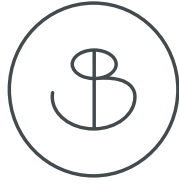










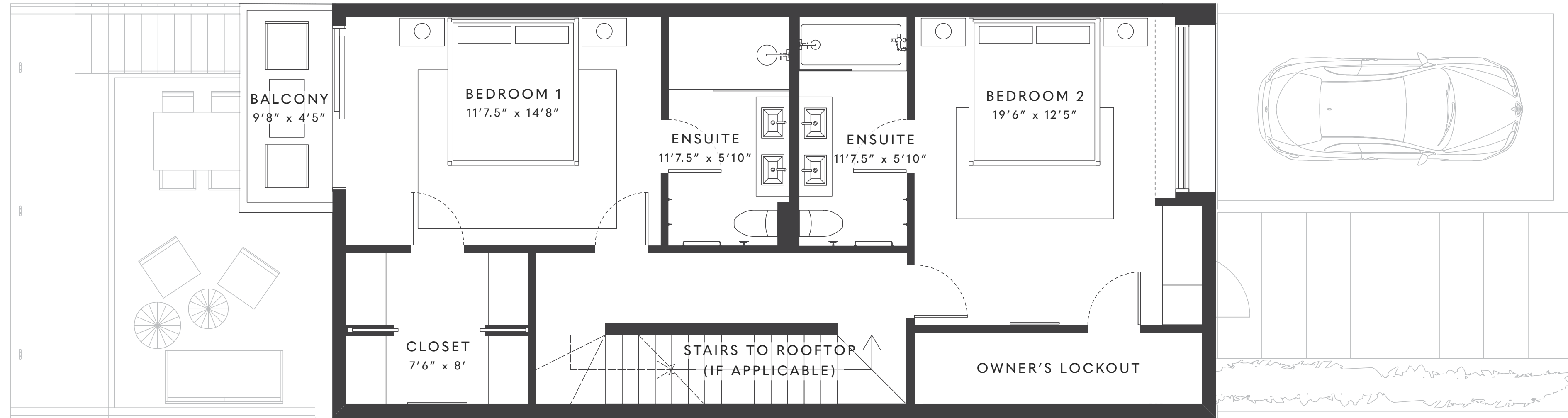
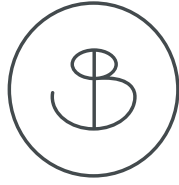


# First Floor

## *Typical Layout*

TOTAL COVERED AREA	874 SQFT
TOTAL EXTERNAL AREA	329 SQFT
TOTAL AREA	1,203 SQFT

The content of this brochure does not form part of any contract, nor does any part constitute a representation or a warranty. The plans and renderings illustrated depict the overall style of the development and have been prepared for illustrative purposes and are indicative only. The plans are not drawn to scale. The exact dimensions of each lot will vary and shall be confirmed prior to legal transfer of the title to the plot. The plans and renderings depict the intended layout and design at the time of creating this document, however the developer reserves the right to make changes to the layouts shown at the sole discretion of the developer.

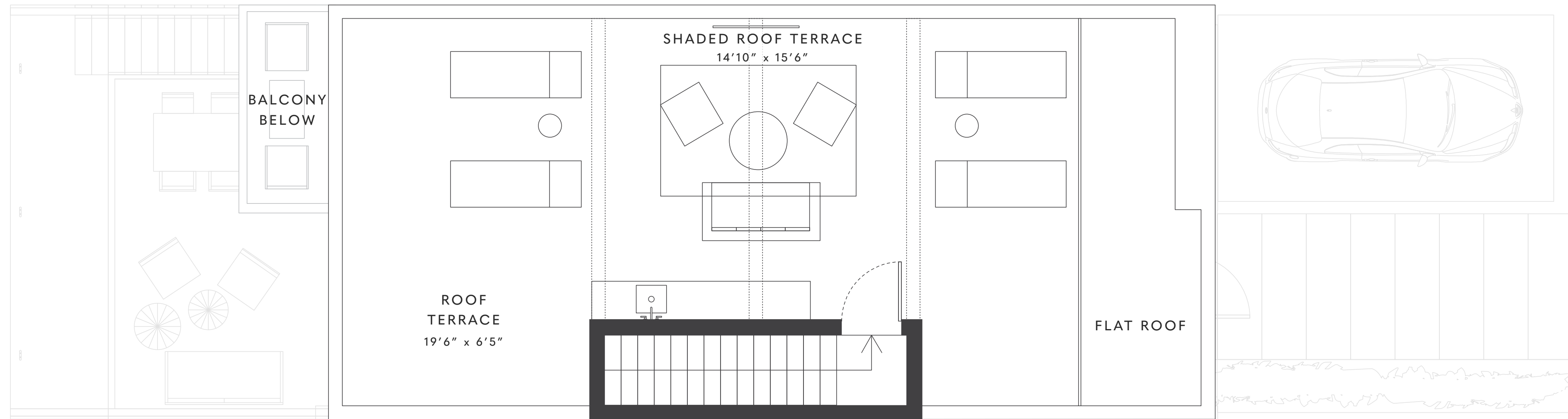
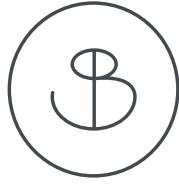


# Second Floor

## *Typical Layout*

TOTAL COVERED AREA	825 SQFT
TOTAL EXTERNAL AREA	49 SQFT
TOTAL AREA	874 SQFT

The content of this brochure does not form part of any contract, nor does any part constitute a representation or a warranty. The plans and renderings illustrated depict the overall style of the development and have been prepared for illustrative purposes and are indicative only. The plans are not drawn to scale. The exact dimensions of each lot will vary and shall be confirmed prior to legal transfer of the title to the plot. The plans and renderings depict the intended layout and design at the time of creating this document, however the developer reserves the right to make changes to the layouts shown at the sole discretion of the developer.



# Roof Terrace

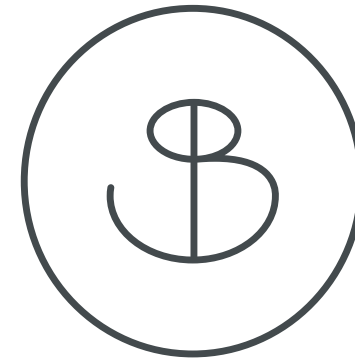
## *Typical Layout*

TOTAL COVERED AREA	84 SQFT
TOTAL EXTERNAL AREA	398 SQFT
TOTAL AREA	482 SQFT

The content of this brochure does not form part of any contract, nor does any part constitute a representation or a warranty. The plans and renderings illustrated depict the overall style of the development and have been prepared for illustrative purposes and are indicative only. The plans are not drawn to scale. The exact dimensions of each lot will vary and shall be confirmed prior to legal transfer of the title to the plot. The plans and renderings depict the intended layout and design at the time of creating this document, however the developer reserves the right to make changes to the layouts shown at the sole discretion of the developer.







SOUTH BANK

TURKS & CAICOS

Call it *home*