

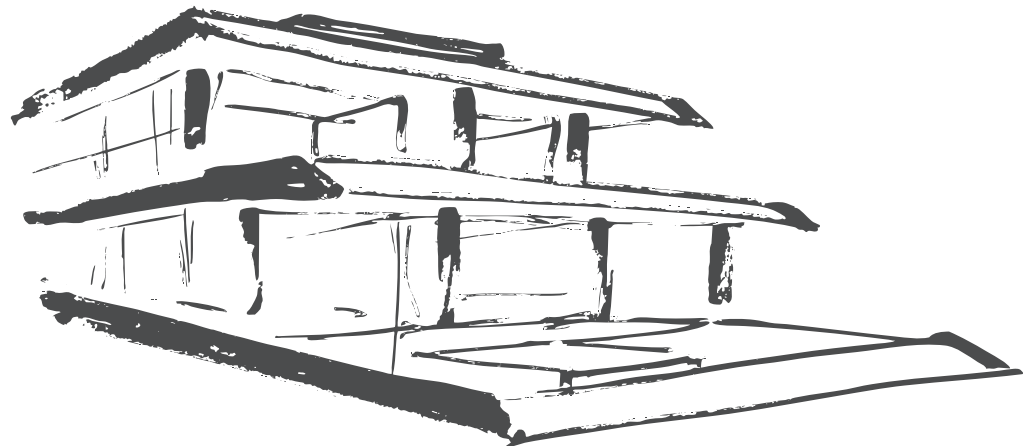
SOUTH BANK

TURKS & CAICOS

OCEAN ESTATE

Beach *Villas*





Space to be *you*

Providenciales

South Bank

Beach Villas



Providenciales

South Bank

Beach Villas

Seamless Indoor and Outdoor Spaces



Expansive Living and Dining

Inspired by the graceful design of the Arc Sky Villas, the two expansive Ocean Estate Beach Villas embody the relaxed sophistication of South Bank living. These remarkable homes present the final opportunity to own a residence on the Ocean Estate.

Total Areas

INTERNAL AC AREA	7,246 SQFT
COVERED OUTDOOR + GARAGE	4,393 SQFT
EXTERNAL AREA	2,921 SQFT
TOTAL AREA	14,560 SQFT

The *Life*



Celebrating The Ocean



Providenciales

South Bank

Beach Villas

Feature Staircase and Expansive First Floorplan

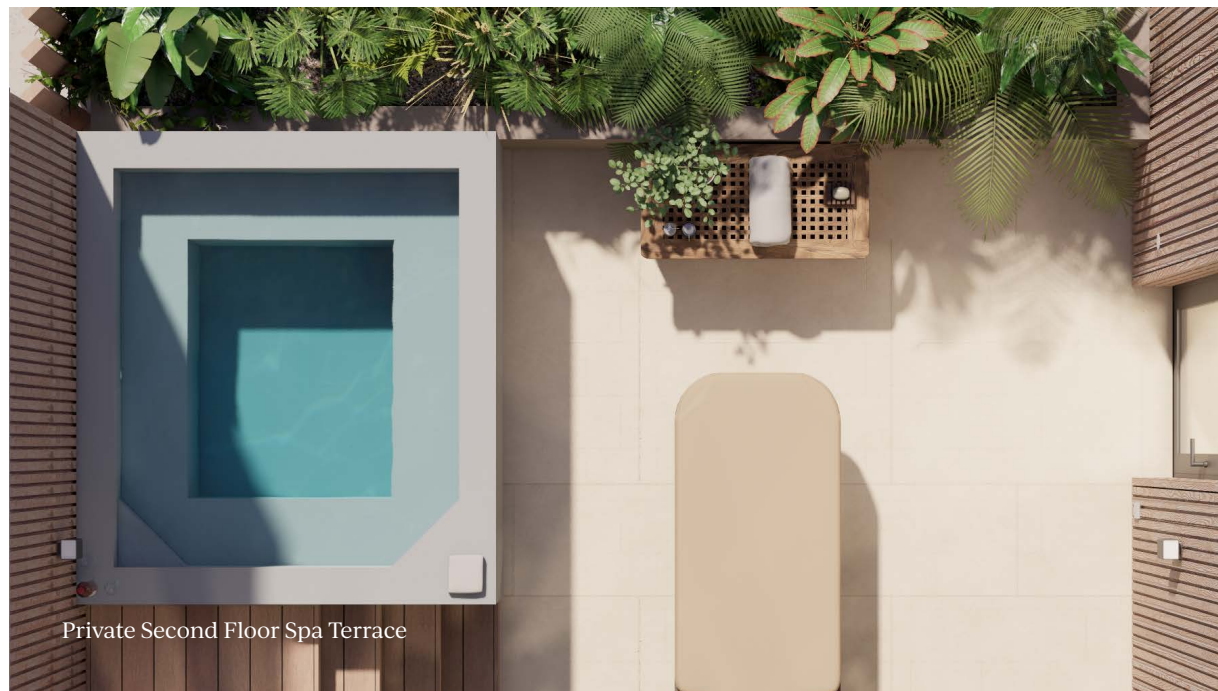


Providenciales

South Bank

Beach Villas

Rooftop Covered Dining and Lounge, with Optional Pool



Private Second Floor Spa Terrace



Great Room



Primary bathroom

Spanning over 7,250 square feet under AC and an additional 4,000 square feet of covered outdoor space, these homes are designed for reflection, celebration, and the pure joy of beachfront living in the Caribbean.

Nestled on South Bank's private beach, these four-level residences blend seamless indoor-outdoor living. At their heart, a striking spiral staircase connects open-plan interiors with expansive poolside terraces, leading to the resort's beach on the Caicos Bank. Relax in the tranquil spa garden terrace with optional pool. Or enjoy spending time in the screened outdoor living and dining lounge. An elevator also connects all floors for easy access.

Features Include:

- Five ensuite bedrooms with private terraces overlooking the Caicos Bank and Boathouse Basin
- Direct access to South Bank resort beach
- Italian designed Boffi kitchens
- Gaggenau or equivalent appliances
- 16.4ft x 24.10ft garage
- Media room
- 33ft x 15.10ft Pool
- Sunken firepit terrace



Providenciales

South Bank

Beach Villas

Spiral Staircase and Open Ground Floorplan



Beach Front View for Primary Bedrooms



Providenciales

South Bank

Beach Villas

Beachfront *lifestyle*

Set against the natural beauty of Long Bay Beach and iron shore, South Bank offers a relaxed, ocean-inspired lifestyle.

With four distinct neighborhoods, world-class facilities and a fully managed resort, South Bank provides a truly unique island living experience.

Resort Amenities Include:

- Long Bay beach access
- 24-hr security and gated access
- Turn-key villa management program
- Restaurants and bars
- Lagoon islands and beach with firepits, loungers, and tiki bar
- Resort pool and jacuzzi
- Resort beach with serviced loungers and cabanas
- Tennis and pickleball courts
- Spa, including in-villa services
- Gym featuring Technogym equipment
- Full-service South Bank Marina, including boat storage and concierge services



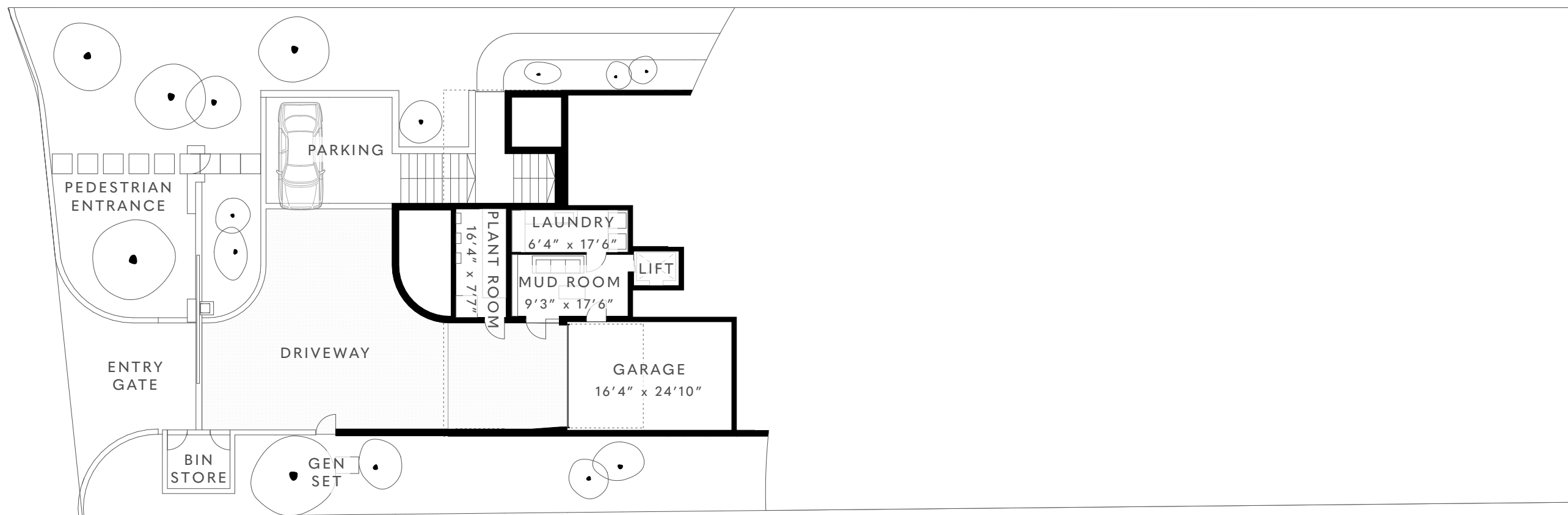


Providenciales

South Bank

Beach Villas

Direct Access to Resort Beach



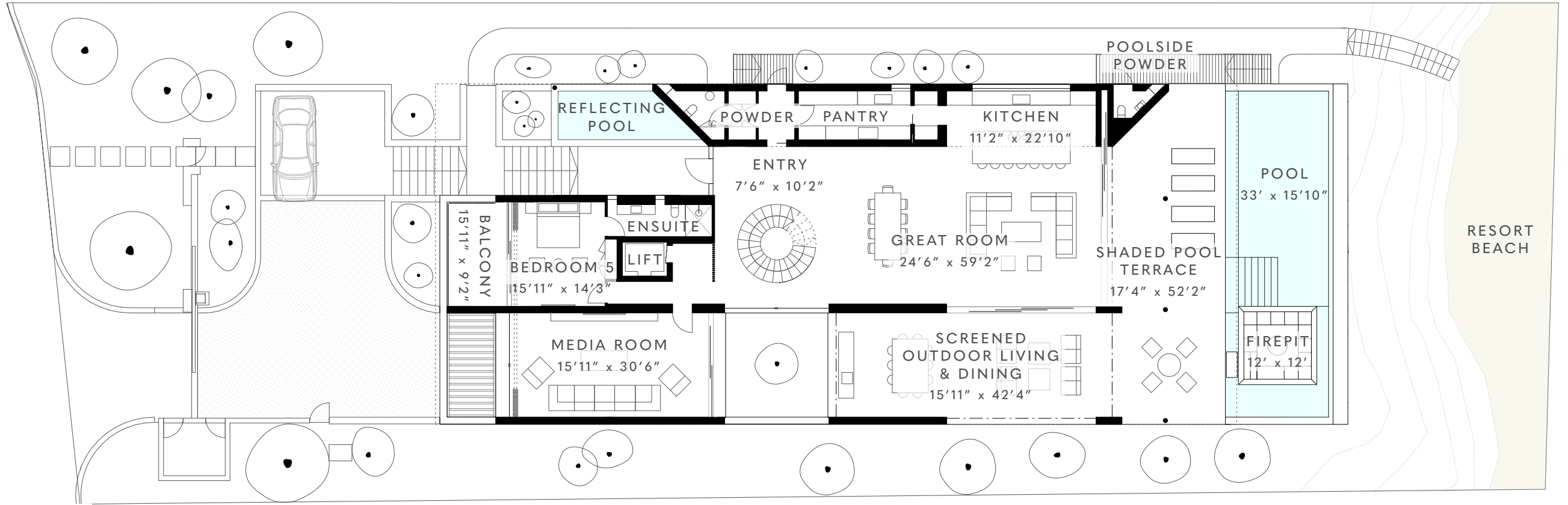
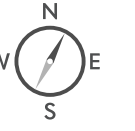
Beach Villas

Ground Floor



INTERNAL AC AREA	337 SQFT
COVERED OUTDOOR + GARAGE	596 SQFT

The content of this brochure does not form part of any contract, nor does any part constitute a representation or a warranty. The plans and renderings illustrated depict the overall style of the development and have been prepared for illustrative purposes and are indicative only. The plans are not drawn to scale. The exact dimensions of each lot will vary and shall be confirmed prior to legal transfer of the title to the plot. The plans and renderings depict the intended layout and design at the time of creating this document, however the developer reserves the right to make changes to the layouts shown at the sole discretion of the developer.



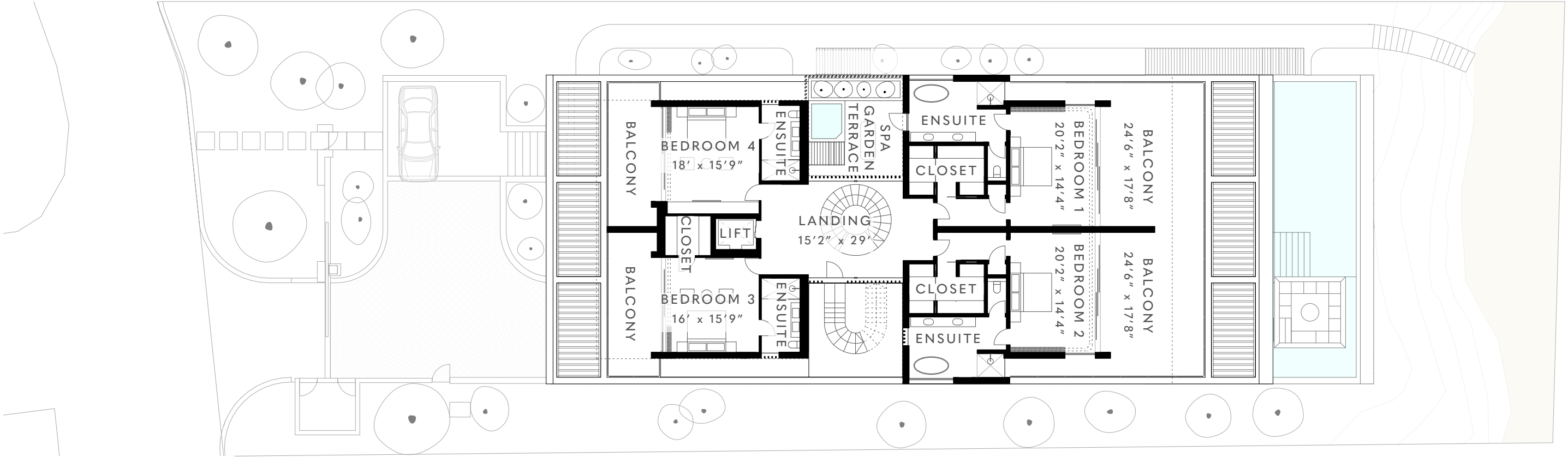
Beach Villas

First Floor



INTERNAL AC AREA	3,328 SQFT
COVERED OUTDOOR	2,255 SQFT
EXTERNAL AREA	1,139 SQFT

The content of this brochure does not form part of any contract, nor does any part constitute a representation or a warranty. The plans and renderings illustrated depict the overall style of the development and have been prepared for illustrative purposes and are indicative only. The plans are not drawn to scale. The exact dimensions of each lot will vary and shall be confirmed prior to legal transfer of the title to the plot. The plans and renderings depict the intended layout and design at the time of creating this document, however the developer reserves the right to make changes to the layouts shown at the sole discretion of the developer.



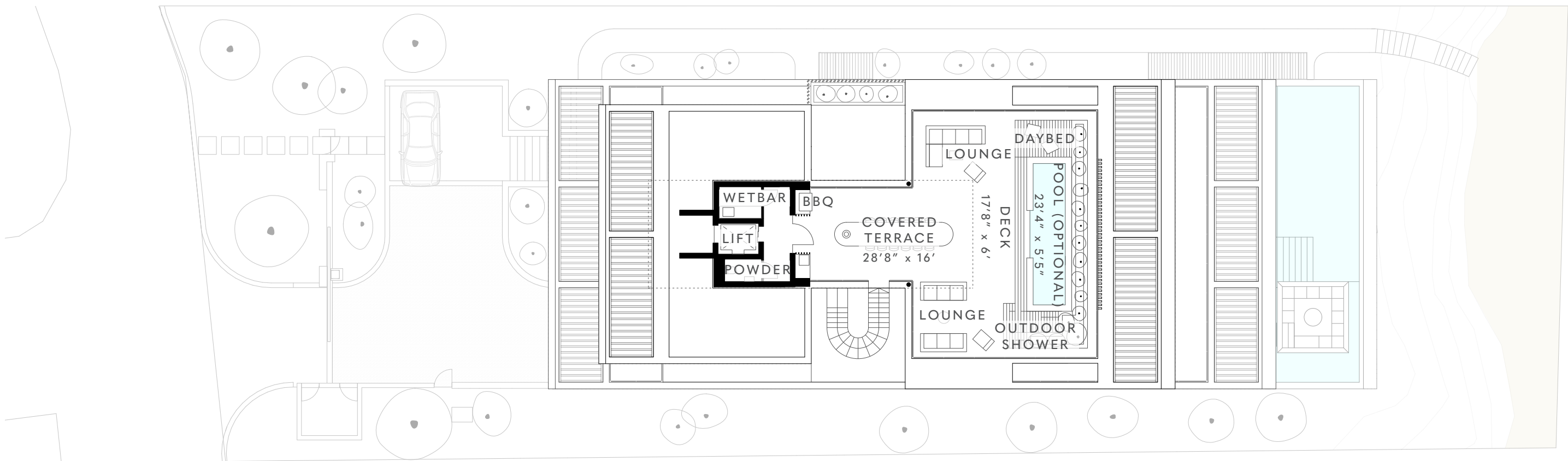
Beach Villas

Second Floor



INTERNAL AC AREA	3,343 SQFT
COVERED OUTDOOR	1,068 SQFT
EXTERNAL AREA	576 SQFT

The content of this brochure does not form part of any contract, nor does any part constitute a representation or a warranty. The plans and renderings illustrated depict the overall style of the development and have been prepared for illustrative purposes and are indicative only. The plans are not drawn to scale. The exact dimensions of each lot will vary and shall be confirmed prior to legal transfer of the title to the plot. The plans and renderings depict the intended layout and design at the time of creating this document, however the developer reserves the right to make changes to the layouts shown at the sole discretion of the developer.



Beach Villas

Roof Terrace



INTERNAL AC AREA	238 SQFT
COVERED OUTDOOR	473 SQFT
EXTERNAL AREA	1,206 SQFT

The content of this brochure does not form part of any contract, nor does any part constitute a representation or a warranty. The plans and renderings illustrated depict the overall style of the development and have been prepared for illustrative purposes and are indicative only. The plans are not drawn to scale. The exact dimensions of each lot will vary and shall be confirmed prior to legal transfer of the title to the plot. The plans and renderings depict the intended layout and design at the time of creating this document, however the developer reserves the right to make changes to the layouts shown at the sole discretion of the developer.



Providenciales

South Bank

Beach Villas

Ground Floor Garage with Elevator Access to all Floors



Providenciales

South Bank

Beach Villas

Rooftop Terrace with Covered Dining, Wetbar and Optional Pool

“At the end of the day,
your feet should be sandy,
your hair messy and *your*
eyes sparkling.”

Shanti

WINDWARD
Graceway House
Graceway Plaza
Providenciales
Turks & Caicos Islands

WINDWARD.TC

EMAIL ADDRESS
contact@livesouthbank.com

LIVESOUTHBANK.COM

@southbankresort
@LiveSouthBank

The content of this brochure does not form part of any contract, nor does any part constitute a representation or a warranty. The renderings illustrated depict the overall style of the development and have been prepared for illustrative purposes and are indicative only. The renderings are not drawn to scale. The exact dimensions of each lot may vary and shall be confirmed prior to legal transfer of the title to the plot. The renderings depict the intended layout and design at the time of creating this content, however the developer reserves the right to make changes to the layouts shown at the sole discretion of the developer.

