



SOUTH BANK

TURKS & CAICOS

Arc

By Piero Lissoni

A South Bank Neighborhood



BEACHFRONT AERIAL VIEW OF ARC

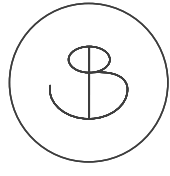


A new *level*

Arc at South Bank is home to seventeen spectacular Sky Villas which introduce a new way of island living. Nothing ordinary. Nothing expected.

Sky, sea, nature and space are its signature. Intimate havens where thoughtful combinations of materials play together to create silent details, and transitions between indoor and outdoor space are seamless. Surrounded by the beauty of place, every aspect offers a new perspective over the breathtaking Caicos Bank, Juba Sound and the South Bank Lagoon and Marina.

Arc reinvents and invigorates elevated waterfront living with extraordinary space and style. Live your life re-imagined.



LISSONI®

Elevated *beachfront living*

Designed by world-renowned architect Piero Lissoni, the freedom and seclusion of private villa living at South Bank has been embraced and enhanced.

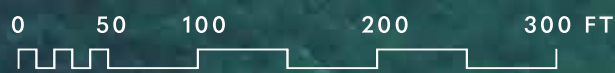
Inspired by the daily patterns of villa lifestyles and a sense of place, modern interiors and immense Air Gardens create an organic, living structure for unparalleled indoor and outdoor living.



The LISSONI® trademark is owned by Piero Lissoni and any use of such mark by South Bank and Arc is under license.

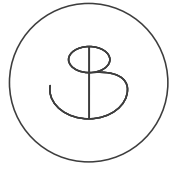


SOUTH BANK
TURKS & CAICOS



- 1 THE OCEAN ESTATE
- 2 THE LAGOON
- 3 THE LAUNCH
- 4 ARC
- 5 RESORT POOL, BEACH AND BEACHFRONT RESTAURANT
- 6 THE MARINA AT SOUTH BANK
- 7 TENNIS AND PICKLEBALL COURTS
- 8 GYM, SPA AND LOUNGING PENINSULA
- 9 CLUB HOUSE, RESTAURANT AND BAR
- 10 SOUTH BANK ENTRANCE AND ROUNDABOUT
- 11 RESORT BEACH ACCESS

The content of this brochure does not form part of any contract, nor does any part constitute a representation or a warranty. The plans and renderings illustrated depict the overall style of the development and have been prepared for illustrative purposes and are indicative only. The plans are not drawn to scale. The exact dimensions of each lot will vary and shall be confirmed prior to legal transfer of the title to the plot. The plans and renderings depict the intended layout and design at the time of creating this document, however the developer reserves the right to make changes to the layouts shown at the sole discretion of the developer.



Sky Villas

SKY VILLAS



- 17 Residences
- Resort Pool & Arc Pool
- Jacuzzi
- Beach Restaurant & Bar
- Serviced Resort Beach
- Gym
- Resident's Lounge
- Board Room
- Underground Parking



EXTERIOR AERIAL VIEW OF ARC



TWO BEDROOM LIVING AND DINING AREA CONNECTED TO THE OUTDOORS



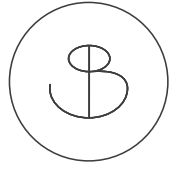


SEAMLESS CONNECTIVITY INSIDE AND OUT





EXTERIOR BEACH VIEW OF ARC



Arc Features

- Designed by world-renowned architect Piero Lissoni
- 17 Sky Villas ranging from 2 to 5 bedrooms
- Lockout bedroom format on floors two to five
- Bespoke Italian designer kitchens by Boffi
- Gaggenau, or equivalent, appliances
- Indoor-outdoor villa lifestyle
- Raised, heated pool and/or Jacuzzi in each Villa
- Outdoor rain shower
- Outdoor kitchen
- Elevator access – dedicated or shared by two Sky Villas
- Dedicated underground parking space
- Dedicated Arc Gym
- Dedicated Arc Pool
- South and North facing views in all Villas
- Unprecedented villa-like exterior spaces with landscaping on all terraces

Now Operational South Bank Features

- Affiliated full-service Marina
- Boat concierge
- Spa and gym
- Tennis and Pickleball courts
- Clubhouse with Restaurant and Bar
- Rental program managed by Grace Bay Resorts
- Swimming Lagoon with lounging islands

Future Arc Features

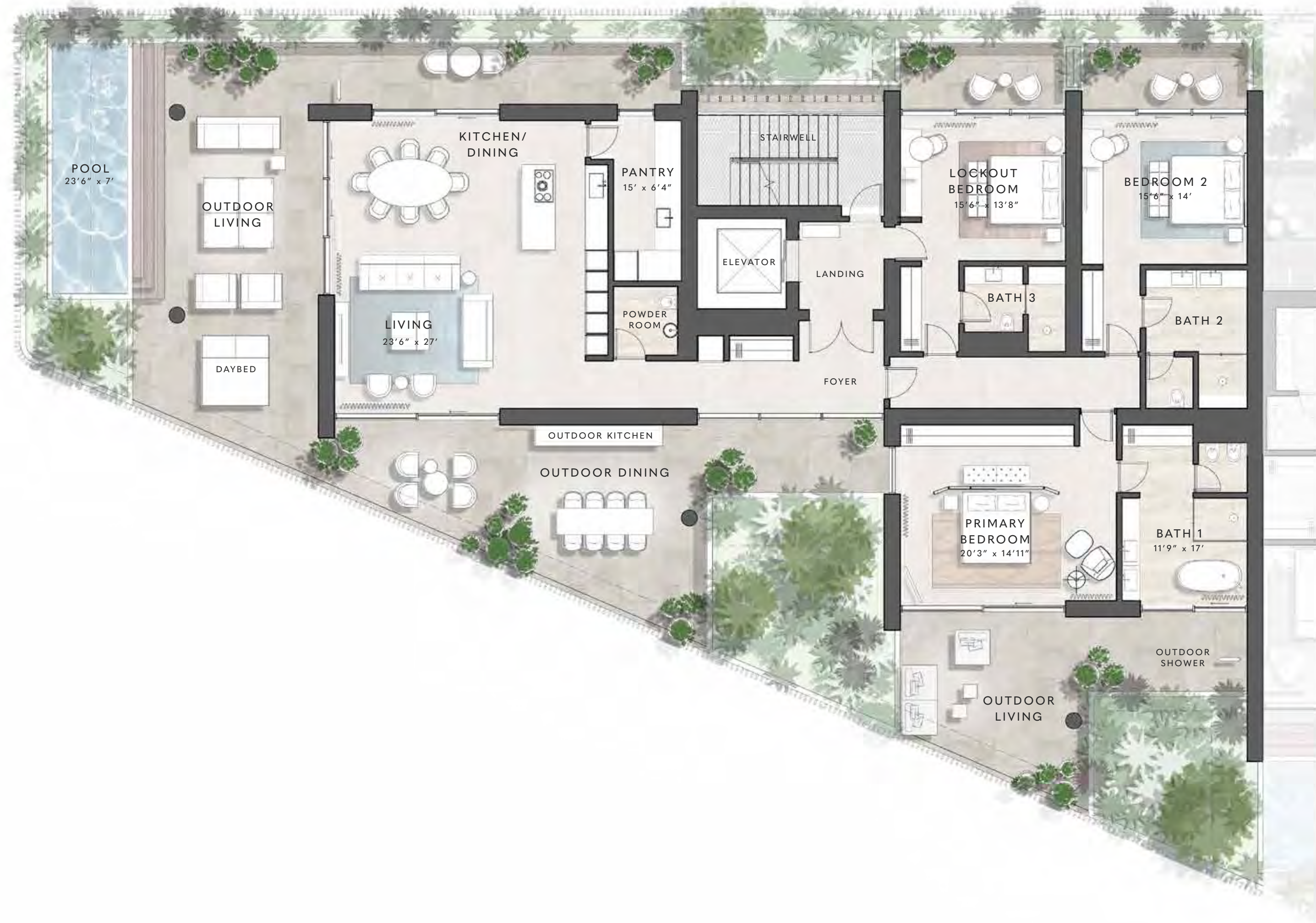
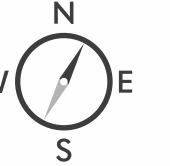
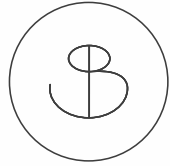
- Beachfront Restaurant and Bar
- Board Room
- Resort Pool with Jacuzzi
- Resort beach

Specification



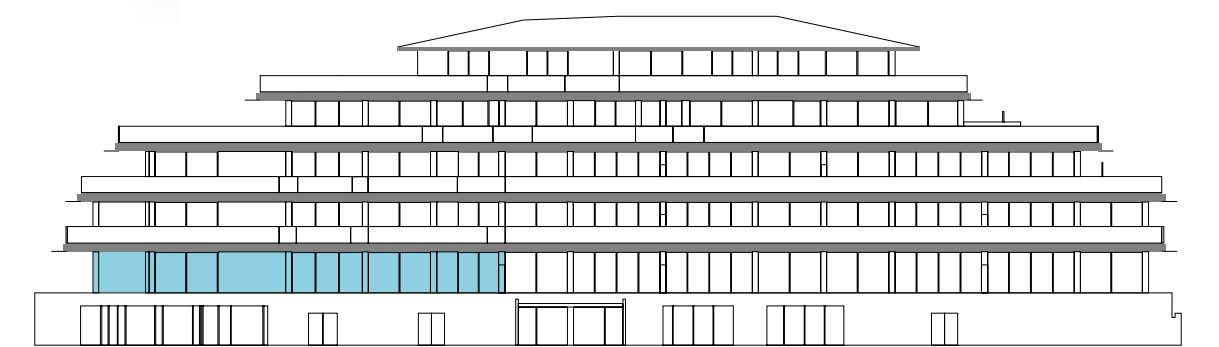
SECOND LEVEL BALUSTRADE



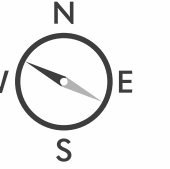
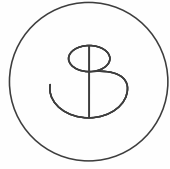


Sky Villa 2A

FLOOR	2
BEDROOMS	3
BATHROOMS	3.5
INTERNAL AREA	2930 SQFT
TOTAL AREA	6150 SQFT

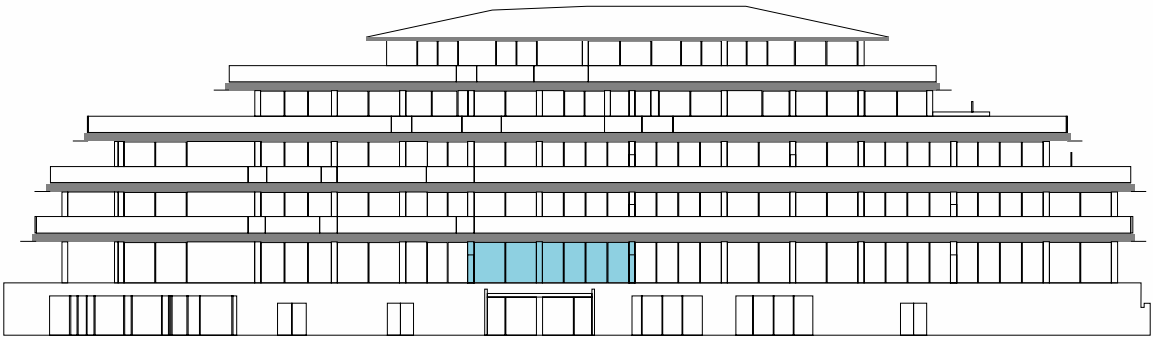


The content of this brochure does not form part of any contract, nor does any part constitute a representation or a warranty. The plans and renderings illustrated depict the overall style of the development and have been prepared for illustrative purposes and are indicative only. The plans are not drawn to scale. The exact dimensions of each lot will vary and shall be confirmed prior to legal transfer of the title to the plot. The plans and renderings depict the intended layout and design at the time of creating this document, however the developer reserves the right to make changes to the layouts shown at the sole discretion of the developer.



Sky Villa 2B

FLOOR	2
BEDROOMS	2
BATHROOMS	2.5
INTERNAL AREA	1870 SQFT
TOTAL AREA	3280 SQFT



The content of this brochure does not form part of any contract, nor does any part constitute a representation or a warranty. The plans and renderings illustrated depict the overall style of the development and have been prepared for illustrative purposes and are indicative only. The plans are not drawn to scale. The exact dimensions of each lot will vary and shall be confirmed prior to legal transfer of the title to the plot. The plans and renderings depict the intended layout and design at the time of creating this document, however the developer reserves the right to make changes to the layouts shown at the sole discretion of the developer.

Arc

By Piero Lissoni



SOUTH BANK

TURKS & CAICOS



Sky Villa 2E

Specification

FLOOR	2
BEDROOMS	3
BATHROOMS	3.5
INTERNAL AREA	2530 SQFT
TOTAL AREA	5210 SQFT



The content of this brochure does not form part of any contract, nor does any part constitute a representation or a warranty. The plans and renderings illustrated depict the overall style of the development and have been prepared for illustrative purposes and are indicative only. The plans are not drawn to scale. The exact dimensions of each lot will vary and shall be confirmed prior to legal transfer of the title to the plot. The plans and renderings depict the intended layout and design at the time of creating this document, however the developer reserves the right to make changes to the layouts shown at the sole discretion of the developer.

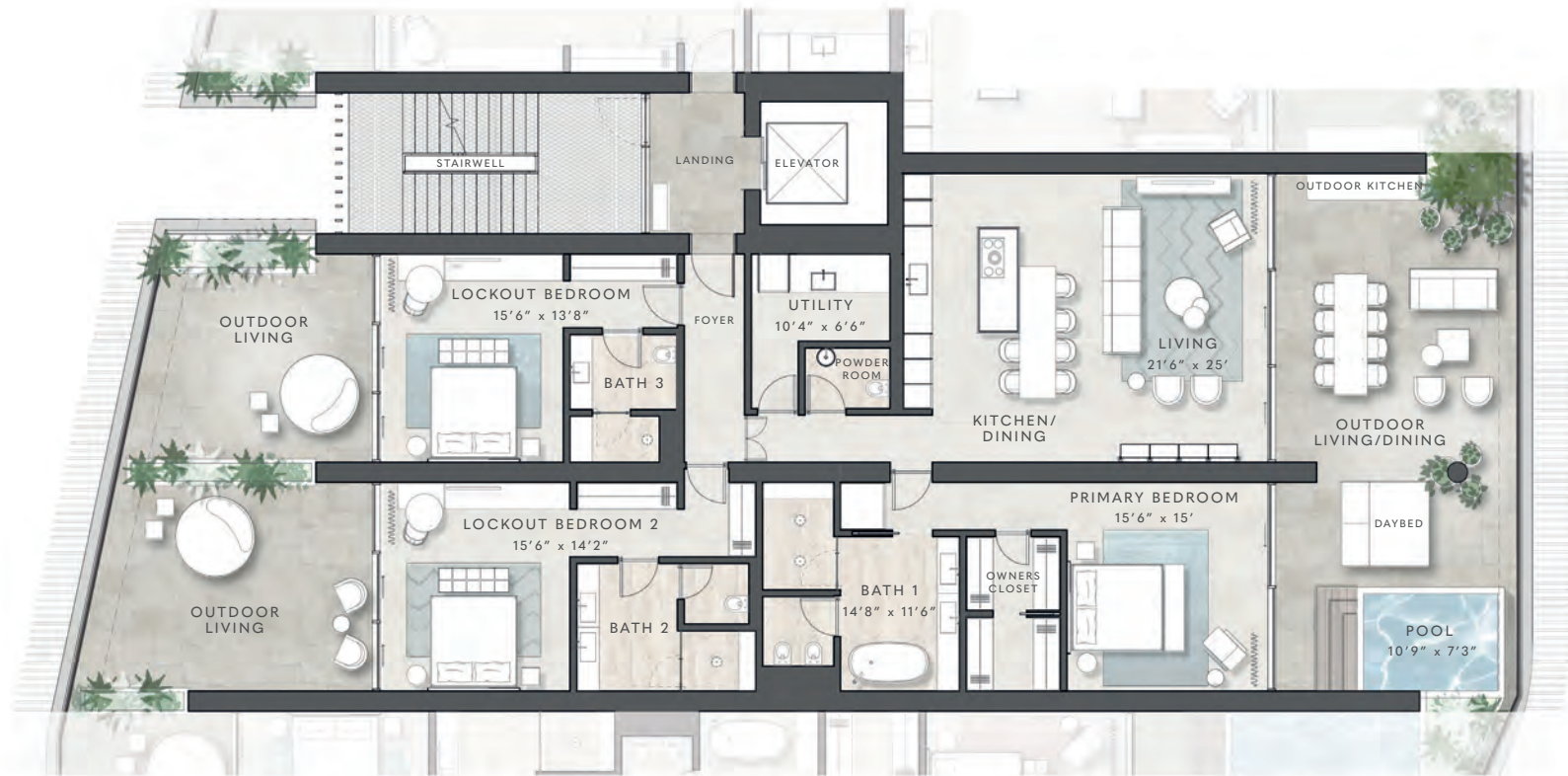
Arc

By Piero Lissoni



SOUTH BANK

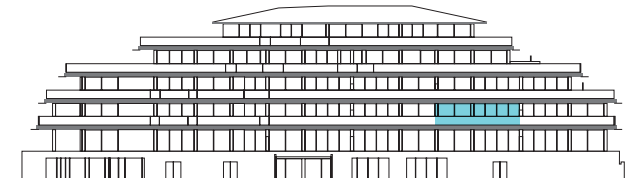
TURKS & CAICOS



Sky Villa 3D

Specification

FLOOR	3
BEDROOMS	3
BATHROOMS	3.5
INTERNAL AREA	2500 SQFT
TOTAL AREA	3930 SQFT



The content of this brochure does not form part of any contract, nor does any part constitute a representation or a warranty. The plans and renderings illustrated depict the overall style of the development and have been prepared for illustrative purposes and are indicative only. The plans are not drawn to scale. The exact dimensions of each lot will vary and shall be confirmed prior to legal transfer of the title to the plot. The plans and renderings depict the intended layout and design at the time of creating this document, however the developer reserves the right to make changes to the layouts shown at the sole discretion of the developer.

Arc

By Piero Lissoni



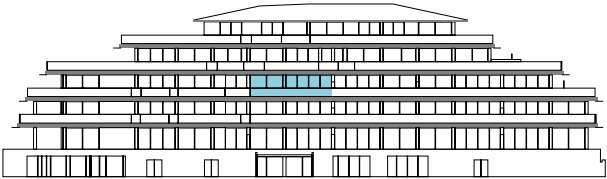
SOUTH BANK
TURKS & CAICOS



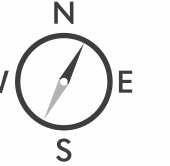
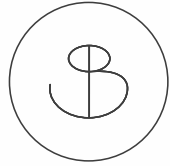
Sky
Villa 4B

Specification

FLOOR	4
BEDROOMS	2
BATHROOMS	2.5
INTERNAL AREA	1870 SQFT
TOTAL AREA	2950 SQFT

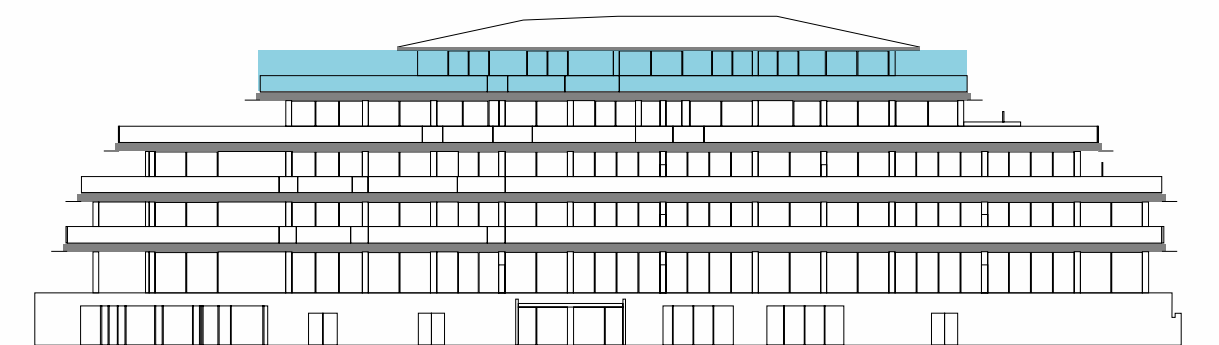


The content of this brochure does not form part of any contract, nor does any part constitute a representation or a warranty. The plans and renderings illustrated depict the overall style of the development and have been prepared for illustrative purposes and are indicative only. The plans are not drawn to scale. The exact dimensions of each lot will vary and shall be confirmed prior to legal transfer of the title to the plot. The plans and renderings depict the intended layout and design at the time of creating this document, however the developer reserves the right to make changes to the layouts shown at the sole discretion of the developer.



Sky Villa 6PH

FLOOR	6
BEDROOMS	5
BATHROOMS	5.5
INTERNAL AREA	5400 SQFT
TOTAL AREA	12630 SQFT

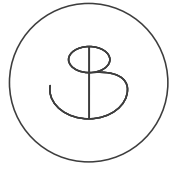


The content of this brochure does not form part of any contract, nor does any part constitute a representation or a warranty. The plans and renderings illustrated depict the overall style of the development and have been prepared for illustrative purposes and are indicative only. The plans are not drawn to scale. The exact dimensions of each lot will vary and shall be confirmed prior to legal transfer of the title to the plot. The plans and renderings depict the intended layout and design at the time of creating this document, however the developer reserves the right to make changes to the layouts shown at the sole discretion of the developer.



18

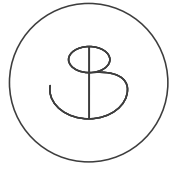
EXTERIOR GROUND LEVEL VIEW OF ARC



Inspired by an *ocean lifestyle*

Built around a love of the ocean, South Bank is a managed residential resort and Marina destination.

Four distinct neighborhoods feature 1-6 bedroom waterfront homes, all with access to extraordinary amenities and effortless services. South Bank inspires a relaxed and sophisticated island lifestyle where friends and family come together to relax, reset and enjoy the laid-back rhythms of life by the ocean.



PIERO LISSONI

Naturally *sophisticated*

With offices in Milan and New York, Lissoni has a thirty-year history of developing international projects in the fields of architecture, landscape, interior, product and graphic design, in addition to being responsible for the art direction for Alpi, Boffi, B&B Italia, Living Divani, Lema, Lualdi, Porro and Sanlorenzo among others.

Famed architectural projects include the Shangri-La Shougang Park in Beijing, Ritz-Carlton Residences in Miami Beach, Grand Park Hotel in Croatia, the restyling of the historic Camparino bar in the Galleria in

Milan, The Middle House in Shanghai and The Oberoi Al Zorah Beach Resort Ajman in the UAE. Arc is Lissoni's first project in both the Caribbean and Providenciales.

Combining expertise with a tailored approach that sets them apart, Lissoni establishes a stylistic code and a visual identity that are clearly and instantly recognizable.



You are in *good hands*

RESORT MANAGEMENT

Grace Bay Resorts

Resort and Villa management will be expertly provided by Grace Bay Resorts, the leading Providenciales hospitality brand. With an unrivaled understanding of this incredible island and all it has to offer visitors, Grace Bay Resorts are perfectly placed to meet your every requirement, making ownership effortless. And when you're not here, you can be sure your home is in good hands.



GRACE BAY RESORTS
HANDMADE EXPERIENCES SINCE 1993

Turks & Caicos

island map





SOUTH BANK
TURKS & CAICOS

Call it *home*

WINDWARD
Graceway House
Graceway Plaza
Providenciales
Turks & Caicos Islands

WINDWARD.TC

EMAIL ADDRESS
contact@windward.tc

LIVESOUTHBANK.COM

@southbankresort
@southbankresort